

# 2014 - 2015 SOLUTIONS GUIDE

For total efficiency



**COMAP**  
SOLUTIONS FOR EFFICIENCY

# CRIMPING TOOLS

Comap offers a range of crimping tools that reinforce the professionalism of this technique and simplify the work for the installer. Novopress ACO102, ACO202 and ECO301 tools allow crimping of all Comap diameters for copper, PEX, multilayer, stainless steel and carbon steel.

## INSERTS FOR NOVOPRESS TOOLS

### TH, THL INSERTS

**7023**  
for MultiSKIN crimping



Size	ITEM No	Qty
14	7023014	1
16	7023016	1
18	7023018	1
20	7023020	1
26	7023026	1
32	7023032	1

## \* NOTE

### COMAP TRACEABILITY



Comap fittings that are crimped with Novopress tools with inserts bear the Comap 'A' mark. This certifies the origin and the compatibility of the tool.

The two inserts are colour coded by diameter to avoid mistakes while mounting the jaws.

### TH INSERTS

**7030S**  
for MultiSKIN crimping



Size	ITEM No	Qty
14 - 16 - 20 26	7030030	1
16-20-26	7030031	1

### EMPTY BOX 7 INSERTS

**7223**  
for MultiSKIN crimping



ITEM No	Qty
7027099	1

## CO INSERTS

**7027**

for PEX crimping



Size	ITEM No	Qty
12	7027012	1
16	7027016	1
20	7027020	1
25	7027025	1

## BOX WITH CO INSERTS

**7030**

for PEX crimping



Size	ITEM No	Qty
12 - 16 - 20 - 25	7030040	1
16-20-25	7030041	1

## EMPTY BOX 4 INSERTS

**7227**

for PEX crimping



ITEM No	Qty
7027099	1

## V INSERTS

**7025**

for copper crimping



Size	ITEM No	Qty
12	7025012	1
14	7025014	1
15	7025015	1
16	7025016	1
18	7025018	1
22	7025022	1
28	7025028	1

## BOX WITH V INSERTS

**7030CU**

for copper crimping



Size	ITEM No	Qty
14 - 16 - 22 - 28	7030020	1

## EMPTY BOX 7 INSERTS

**7225**

for copper crimping



ITEM No	Qty
7025099	1

## M INSERTS

### 7028

for stainless steel and carbon crimping



Size	ITEM No	Qty
12	7028012	1
15	7028015	1
18	7028018	1
22	7028022	1
28	7028028	1

## BOX WITH M INSERTS

### 7030C

for stainless steel and carbon steel crimping



Size	ITEM No	Qty
12 - 15-18- 22- 28	70300050	1

## COLLARS FOR NOVOPRESS TOOLS

## TH COLLAR

### 7037

for MultiSKIN crimping



Size	ITEM No	Qty
40	J232001001	1
50	J232002001	1
63	J232003001	1

## V COLLAR

### 7036

for copper crimping



Size	ITEM No	Qty
42	J231001001	1
54	J231002001	1

## M COLLAR

### 7038

for stainless steel and carbon crimping



Size	ITEM No	Qty
42	43975-50	1
54	44131-50	1
76,1	44345-50	1
88,9	44346-50	1
108	44347-50	1

## EMPTY BOX M PROFILE COLLARS

### 7202

ø 76,1 - 88,9 mm+ adapter



ITEM No	Qty
44328-50	1

## EMPTY BOX FOR COLLARS

### 7229

Empty box for collars 40-42-50-54-63  
2 collars and one adapter



ITEM No	Qty
44306-50	1

# CRIMPING TOOLS

## NOVOPRESS ACO 102

The Novopress ACO 102 is the new generation of the AFP 101 and SP 1932 tools. It offers both power and technology but weighs less than 2kg. With its extreme convenience, it is the essential tool for crimping the most common diameters.

### TECHNICAL CHARACTERISTICS

Power consumption	240W
Nominal force	19kN
Height	70mm
Length	319mm with 7033 battery 345mm with 7032 battery
Width	96mm
Net weight	1.7kg (with battery)
Compression range	Plastic: up to 32mm diameter Metal: up to 28mm diameter
Temperature range during operation	-10°C to +50°C
Crimping cycle time	4.5 sec

### BENEFITS

- **MULTICRIMPING** – One single mother jaw for crimping copper, PEX, MultiSKIN, Cu/PERT, carbon steel and stainless steel.
- **LIGHT AND POWERFUL** – Piston force of 19 kN in a tool weighing only 1.7 kg.
- **CONVENIENT** – Well balanced and as compact as possible for comfortable use with a single hand.
- **QUICK AND PRACTICAL** – With a 4.5 second crimping cycle, 60 compressions are performed with a 7033 battery and 120 compressions with a 7032 battery. Charging times: 30 minutes for 7033 battery and 60 minutes for 7032 battery.
- **EASY MAINTENANCE** – Lights display battery charge level and possible defects as well as indicating when the service level has been reached.
- **CERTIFIED QUALITY** – The Comap “A” certifies the origin and the compatibility of the tool. It is displayed on Comap fittings crimped using Novopress tools with inserts.

## NOVOPRESS ACO 102

### NOVOPRESS ACO 102 SET

NEW

#### ACO102

Novopress ACO 102 tool + charger + battery + mother jaw + box



ITEM No	Qty
44034-12	1

### MOTHER JAW

7022



ITEM No	Qty
7022020	1

### EMPTY BOX

7031



ITEM No	Qty
44684-50	1

### BATTERY 12V 3,0 AH

NEW

7032



ITEM No	Qty
17661-50	1

### BATTERY 12V 1,5AH

NEW

7033



ITEM No	Qty
17660-50	1

### CHARGER

NEW

7034



ITEM No	Qty
17662-50	1

# CRIMPING TOOLS

## NOVOPRESS ACO 202

The powerful new ACO 202 allows you to crimp a wide range of materials, including multilayer, PEX, copper, stainless steel and carbon steel. It is suitable even for big dimensions, using a mother jaw and inserts for diameters up to 32mm and monobloc jaws and collars for bigger diameters. Its state-of-the-art technology gives you optimal quality and setting reliability. The new Li-Ion battery adds extra efficiency and endurance.

### TECHNICAL CHARACTERISTICS

Power consumption	450W
Nominal force	32kN
Height	125mm
Length	408mm with 7232 battery
Width	80mm
Net weight	3.3kg (with battery)
Compression range	Plastic: up to 63mm diameter Stainless steel: up to 54mm diameter
Temperature range during operation	-10°C to +50°C
Crimping cycle time	7 sec

### BENEFITS

- **MULTICRIMPING** – One single mother jaw for crimping copper, PEX, MultiSKIN, Cu/PERT, carbon steel and stainless steel.
- **RELIABILITY** – Constant control of every aspect of crimping, including a load indicator, jaw lock indicator, electronic sensors, crimping failure indicator and sound alarm.
- **CONVENIENCE** – An excellent balance of weight, power and ergonomics. The tool weighs only 3.3kg with battery and features a new 'Soft Grip' handle.
- **AUTONOMY** – Thanks to the Lithium Ion battery, the tool is both lightweight and efficient. Up to 110 press cycles can be performed with a fully charged battery.
- **EASY MAINTENANCE** – The logbook allows quick and reliable servicing during an annual check or if the tool is damaged. Maintenance is simple using approved service points.

## NOVOPRESS ACO 202

### NOVOPRESS ACO202 SET

#### ACO202

Novopress ACO 202 tool + charger + battery + mother jaw + box



ITEM No	Qty
J111003001	1

### MOTHER JAW

#### 70221



ITEM No	Qty
7022000	1

### V PROFILE MONOBLOC JAW

#### 70251

Ø 35 for copper



Size	ITEM No	Qty
35	7025035	1

### M PROFILE MONOBLOC JAW

#### 7026

Ø 35 for stainless steel and carbon



Size	ITEM No	Qty
35	43592-50	1

### COLLAR ADAPTER FOR ACO 202

#### 7039

Collar adapter for Ø 40 - 50 - 63 MultiSKIN and Ø 42 - 54 Copper, Stainless Steel and carbon



ITEM No	Qty
J240001001	1

### 18 V 1,5A BATTERY

#### 7230



ITEM No	Qty
J260001001	1

### CHARGER

#### 7231



ITEM No	Qty
J270001001	1

### EMPTY BOX

#### 7232



ITEM No	Qty
J280001001	1



# CRIMPING TOOLS

## NOVOPRESS ECO 301

The ECO 301 XXL is the most powerful tool in the Novopress range and is suitable for sizes above 54mm. This top quality tool features electronic safety equipment for guaranteed reliability. This includes sound and visual failure indicators and a detector for jaw microprocessor controlled effort.

### TECHNICAL CHARACTERISTICS

Power consumption	560W
Nominal force	45kN
Height	110mm
Length	420mm
Width	85mm
Net weight	5kg
Compression range	From 35 to 108mm
Crimping cycle time	Between 6 and 10 seconds

### BENEFITS

- **XXL** – Available with monobloc jaws and collars to crimp diameters up to 108mm.
- **MULTICRIMPING** – The ECO 301 is suitable for copper, carbon steel, stainless steel and multilayer for larger diameters.
- **RELIABILITY** – Hi-tech dependability thanks to superior manufacturing quality and electronic control devices.
- **CONVENIENCE** – Excellent ergonomics with ‘central catch’ makes the ECO 301 extremely handy.
- **EFFICIENCY** – 230V power supply allows continuous work even on the largest diameters.
- **EASY MAINTENANCE** – Maintenance is simple using service points approved by Novopress and Comap.

## NOVOPRESS ECO 301

### NOVOPRESS ECO 301 SET

#### ECO301

Novopress ECO 301 + box (no jaw included)



ITEM No	Qty
37562-50	1

### M MONOBLOC JAW

#### 7142

Ø 35 for stainless steel and carbon



ITEM No	Qty
41702-50	1

### COLLAR ADAPTER FOR ECO 301

#### ZB303

Collar adapter for Ø 40 - 50 - 63 MultiSKIN and Ø 42 - 54 Copper, Stainless Steel and carbon



ITEM No	Qty
44266-50	1

### COLLAR ADAPTER FOR ECO 301

#### ZB323

Collar adapter for Ø 76,1 - 88,9 - 108 (first step) for copper, stainless steel, and carbon



ITEM No	Qty
44374-50	1

### COLLAR ADAPTER FOR ECO 301

#### ZB324

Collar adapter for Ø 108 (second step) for copper, stainless steel, and carbon



Size	ITEM No	Qty
108	44375-50	1

### SET WITH M PROFILE COLLAR

#### 7302

Collars M profile (Ø 76,1 and 88,9mm) + adapter + box



ITEM No	Qty
44018-50	1

### SET WITH M PROFILE COLLAR

#### 7303

Collars M profile (Ø 42 and 54mm) + adapter + box



ITEM No	Qty
44024-50	1

### SET WITH M PROFILE COLLAR

#### 7304

Collar M profile (Ø 108mm) + adapter + box (second step)



ITEM No	Qty
44019-50	1

**EMPTY BOX**

**7130**



ITEM No	Qty
36057-50	1

**REMS JAWS**

**V PROFILE JAWS**

**5000**

for REMS AKKUPress, POWERPress and ECOPress



Size	ITEM No	Qty
12	5000012	1
14	5000014	1
15	5000015	1
16	5000016	1
18	5000018	1
22	5000022	1
28	5000028	1
35	5000035	1
42	5000042	1
54	5000054	1

**TH PROFILE JAWS**

**7012**

for REMS AKKUPress, POWERPress and ECOPress



Size	ITEM No	Qty
14	7012014N	1
16	7012016N	1
18	7012018N	1
20	7012020N	1
26	7012026N	1
32	7012032L	1
40	7012043S	1
50	7012050	1
63	7012063	1

**MINI KLAUKE JAWS**

**V PROFILE JAWS**

**7057**

for Mini KLAUKE (MAP2, MAP2L)



Size	ITEM No	Qty
12	SBM12VN	1
14	SBM14VN	1
15	SBM15VN	1
16	SBM16VN	1
18	SBM18VN	1
22	SBM22VN	1
28	SBM28VN	1

**TH PROFILE JAWS**

**7056**

for Mini KLAUKE (MAP2, MAP2L)



Size	ITEM No	Qty
14	7056114	1
16	7056116	1
18	7056118	1
20	7056120	1
26	7056126	1
32	7056132	1



# CRIMPING TOOLS

	Copper	Stainless steel	Carbon steel	Stainless steel	Carbon steel	PEX	MultiSKIN	
	SUDOPress	SUDOPress	SUDOPress	XPress	XPress	PEXPress	SKINPress	
	V	V	V	M	M	CO	TH/THL	TH/THL
	INSERT S Ø12-14 15-16-18 22-28	INSERT S Ø12-14 15-16-18 22-28	INSERT S Ø12-14 15-16-18 22-28	INSERT S Ø12-14 15-16-18 22-28	INSERT S Ø12-14 15-16-18 22-28	INSERT S Ø12-14 15-16-18 22-28	INSERT S Ø12-14 15-16-18 22-28	INSERT S Ø12-14 15-16-18 22-28
MOTHER JAW + INSERTS	ACO 102 ACO 202	ACO 102 ACO 202	ACO 102 ACO 202	ACO 102 ACO 202	ACO 102 ACO 202	ACO 102 ACO 202	ACO 102 ACO	ACO 102 ACO 202
	Ø35	Ø35	Ø35	Ø35				
MONOBLOC JAW	ACO 202 ECO 301	ACO 202 ECO 301	ACO 202 ECO 301	ACO 202 ECO 301				
	COLLAR S Ø42-54	COLLAR S Ø42-54	COLLAR S Ø42-54	CHAINS Ø42-54-76.1-88.9- 108	CHAINS Ø42-54-76.1-88.9- 108		CHAINS Ø42-54-76-63	
ADAPTER + COLLARS	ACO 202 ECO 301	ACO 20 ECO 301	ACO 202 ECO 301	ACO 202 ECO 301	ACO 202 ECO 301		ACO 202 ECO 301	

## Crimping with inserts and mother jaw

- 1 Fix the mother jaw with the axis.
- 2 Fit the insert until the security stop.
- 3 Turn the tool on.
- 4 Crimp until the cycle has been completed.



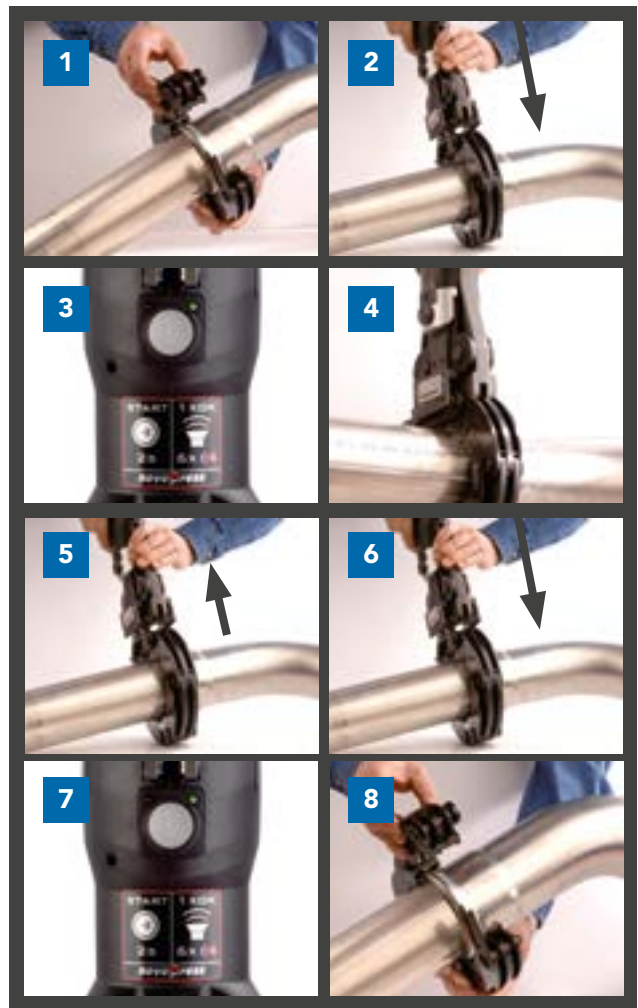
## Crimping with collar and adapter

- 1 Fix the collar around the fitting.
- 2 Fit the adapter to the collar until the security stop.
- 3 Position the tool. Turn the tool on.
- 4 Crimp until the cycle has been completed.

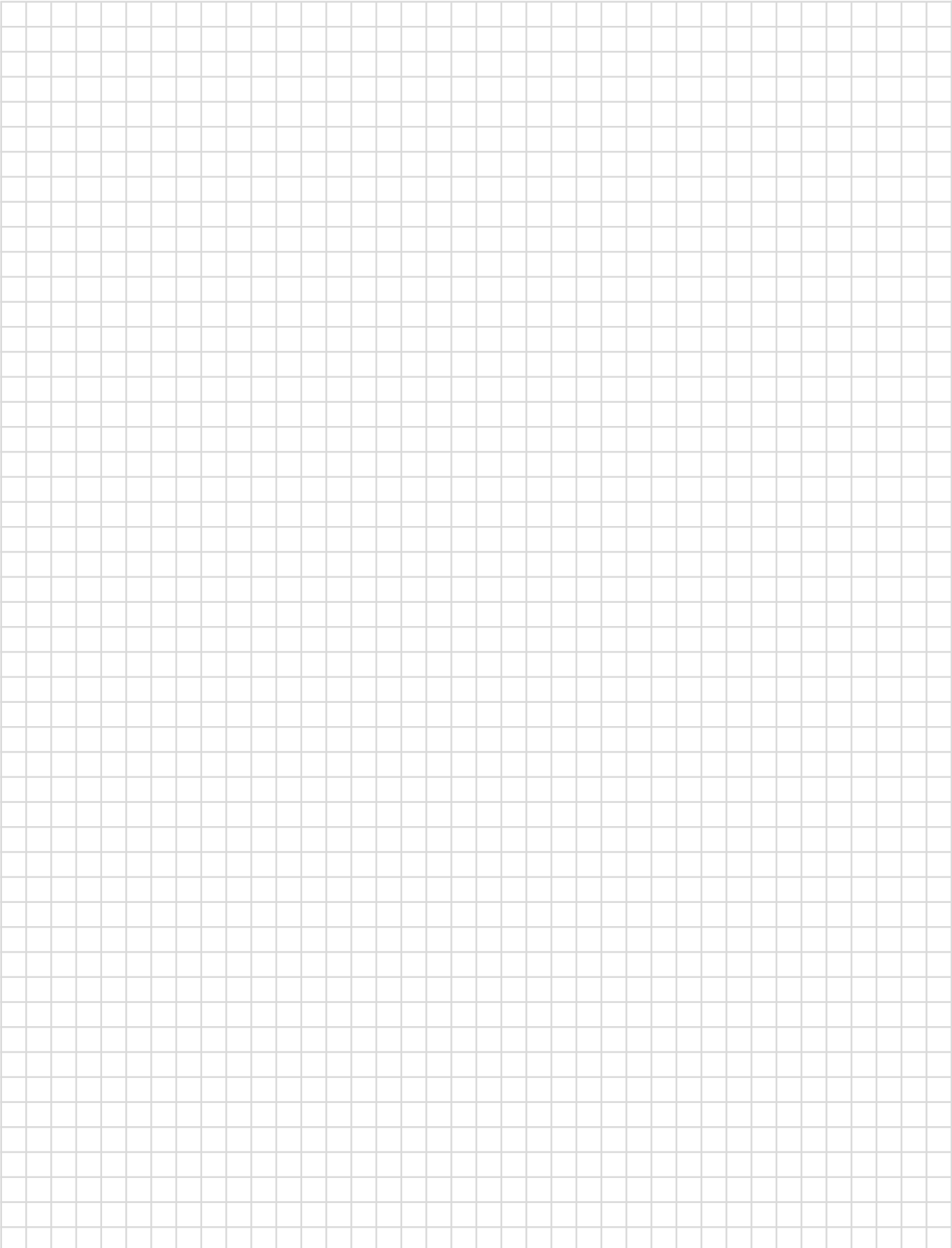


## Crimping for diameter 108 mm

- 1 Place the  $\varnothing$  108 collar around the fitting.
- 2 Fix the first adapter ZB323 to the collar.
- 3 Turn the tool on.
- 4 Crimp until the cycle has been completed.
- 5 Remove the adapter from the collar but leave the collar on.
- 6 Fix the second adapter ZB324 on the other side of the collar.
- 7 Turn the tool on and crimp until the cycle has been completed.
- 8 Remove the adapter and then the collar. The fitting is crimped!



# NOTES



# Contact

**COMAP GROUP**

16 Avenue Paul Santy - BP 8211  
69355 Lyon cedex 08 - France  
+33 (0)4 78 78 16 00

[www.comap-group.com](http://www.comap-group.com)